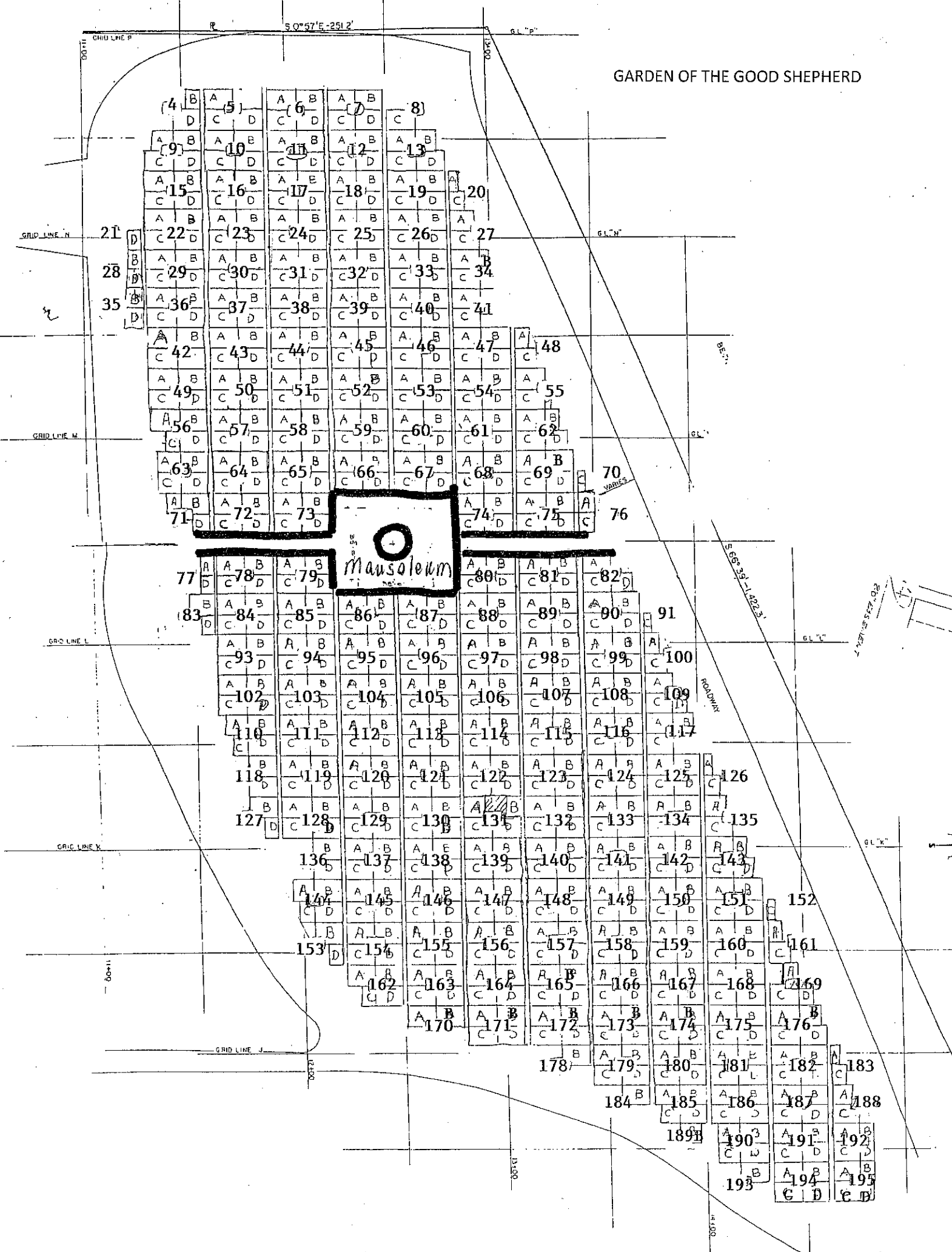


GARDEN OF THE GOOD SHEPHERD



# GARDEN OF THE LIVING CHRIST

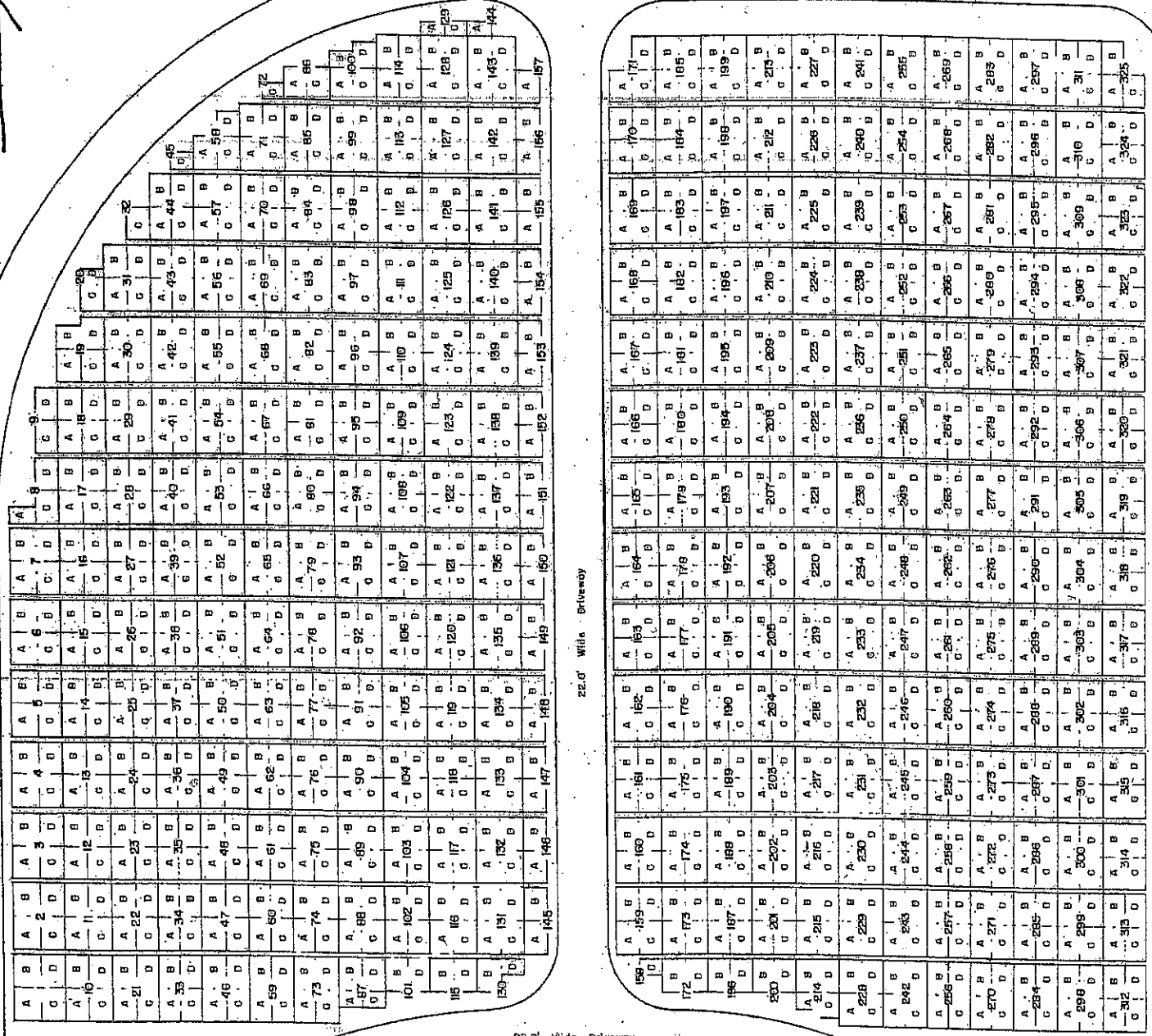
## ROSELAWN MEMORY GARDENS

22.0' Wide Driveway

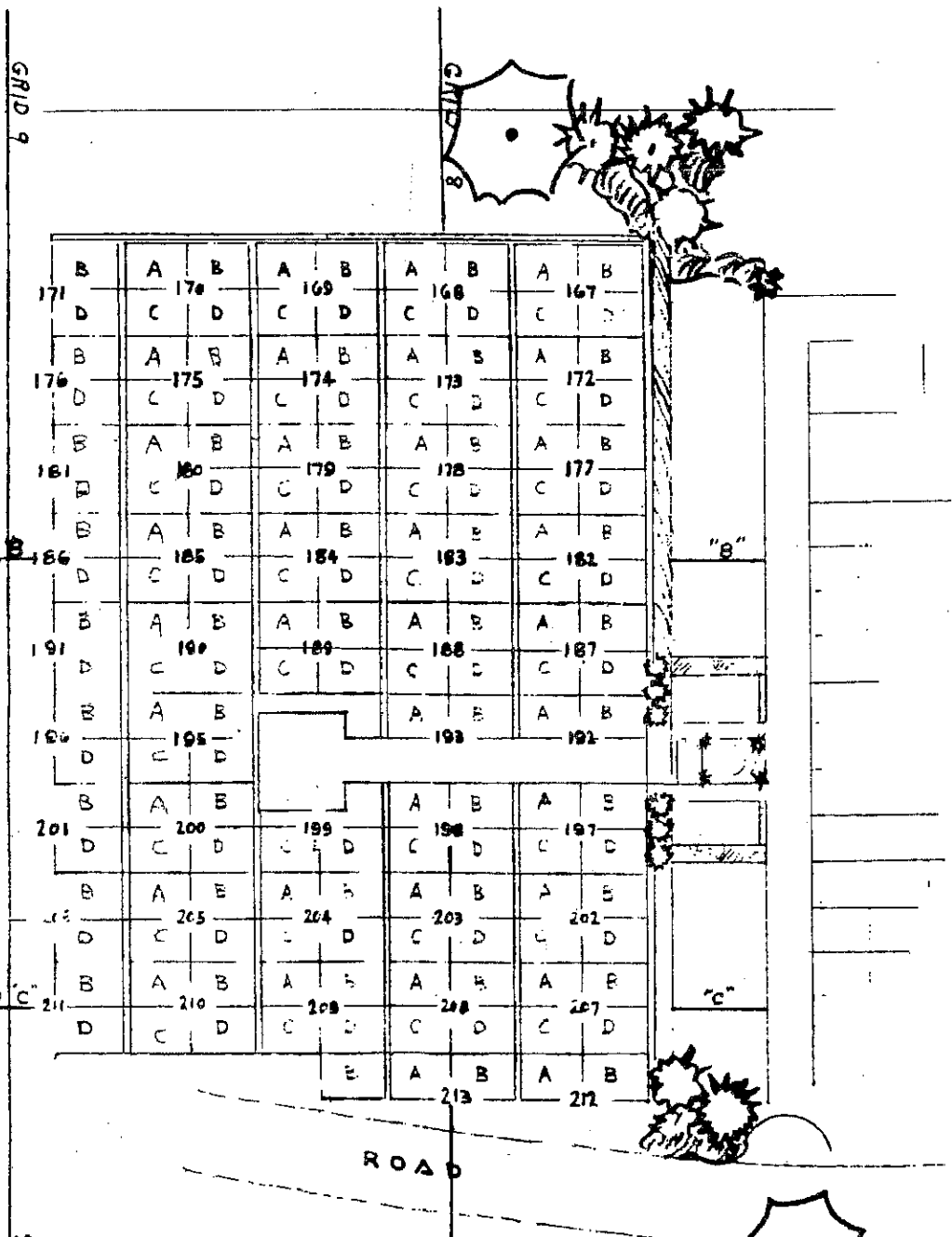
22.0' Wide Driveway

22.0' Wide Driveway

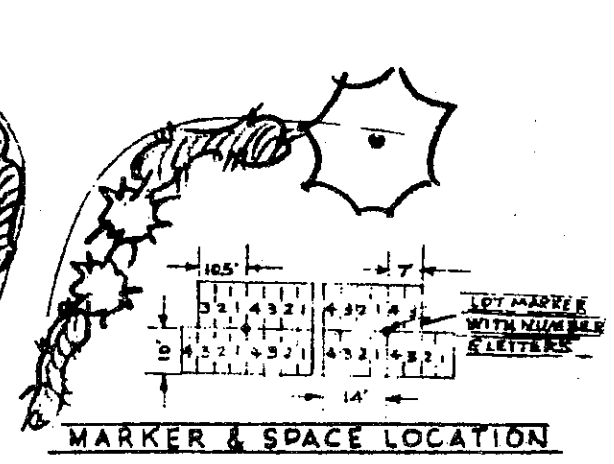
22.0' Wide Driveway



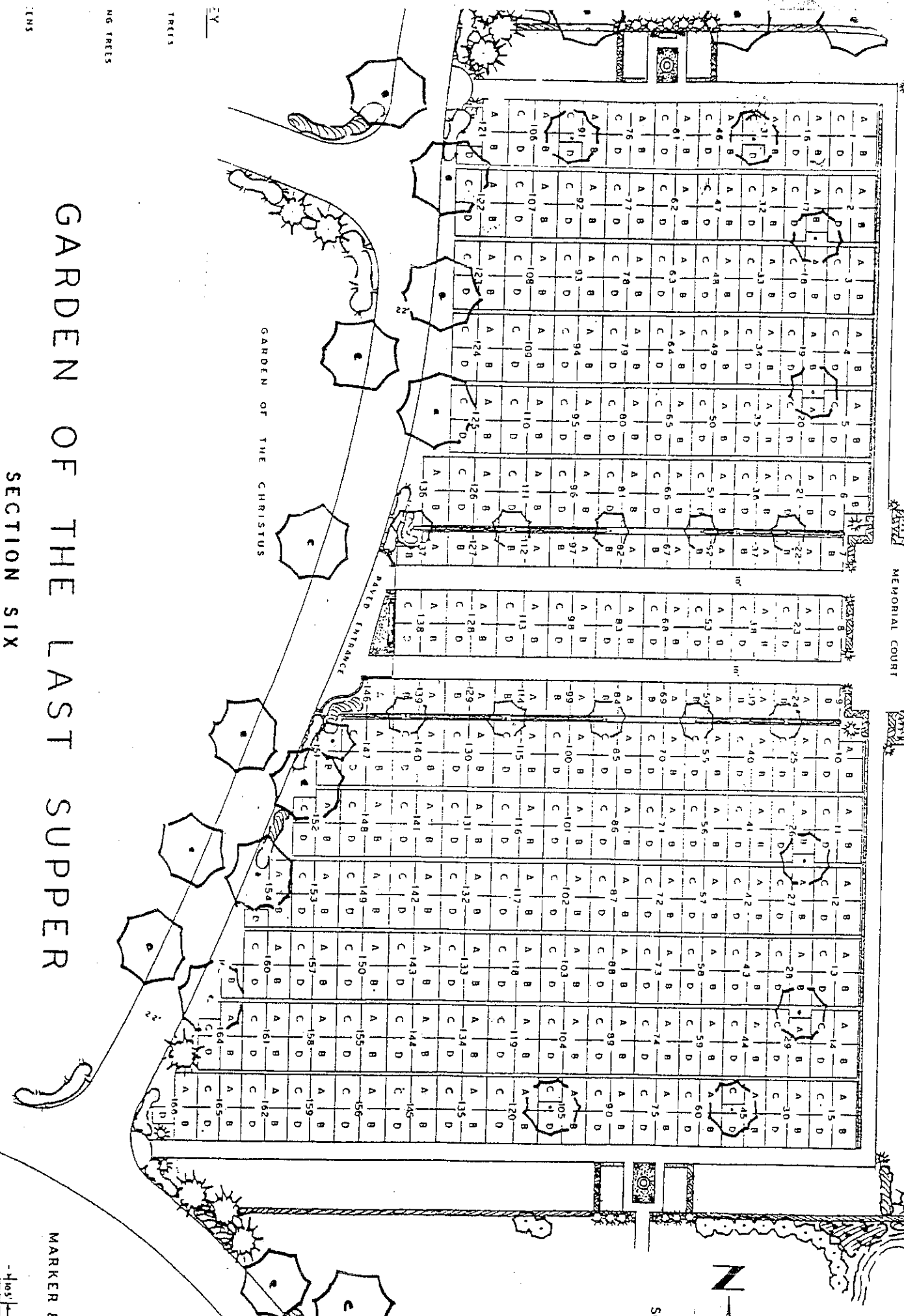
22.0' Wide Driveway



LAST SUPPER ADDITION  
SECTION SIX  
ROSE LAWN MEMORY GARDEN



Mausoleum  
MEMORIAL COURT



# GARDEN OF THE LAST SUPPER

## SECTION SIX

### ROSELAWN MEMORY GARDENS

MADISON COUNTY, ILLINOIS

MARKER & S

SCA

GA

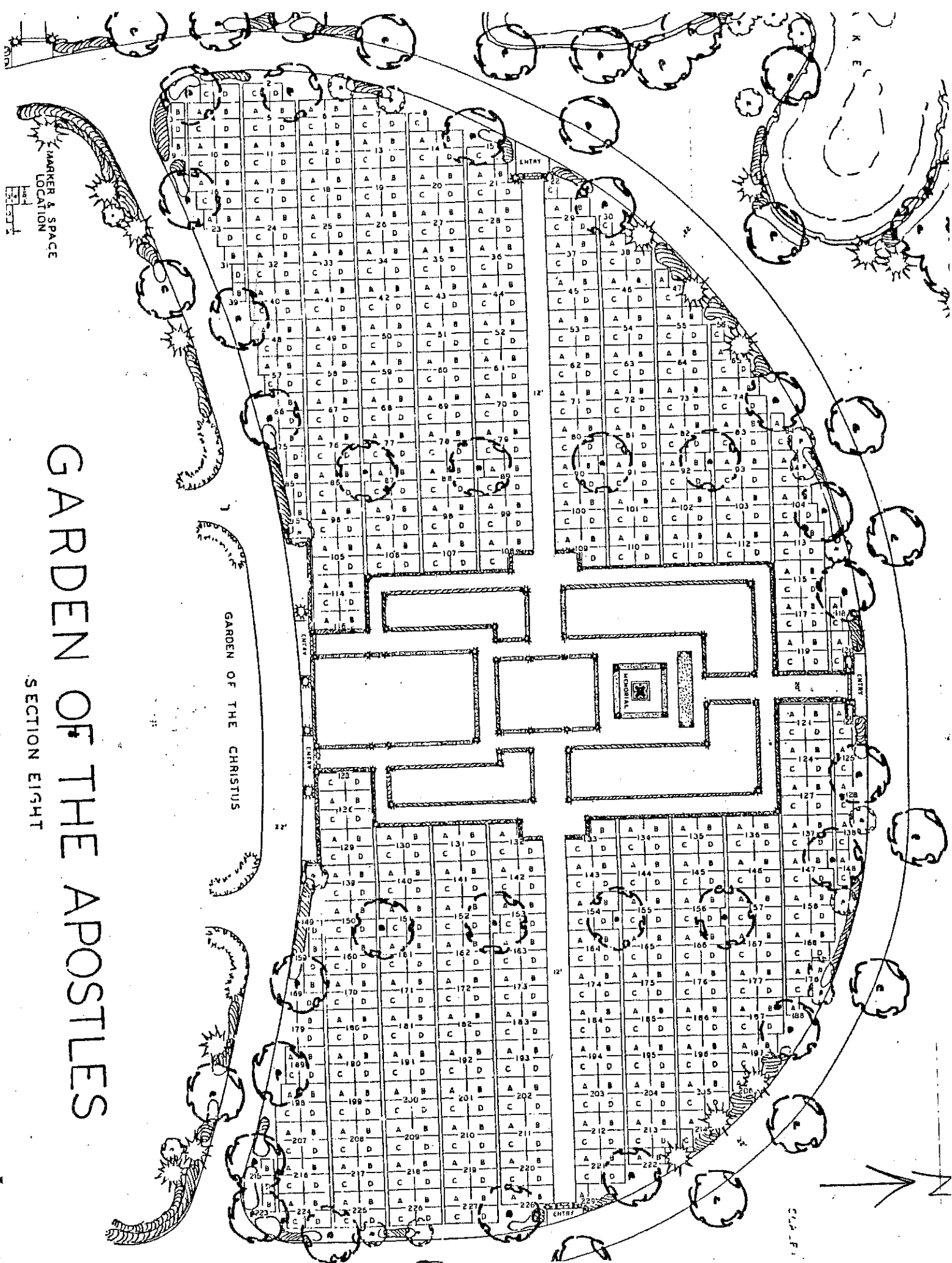
NG TREES

TREES

TENS

BY





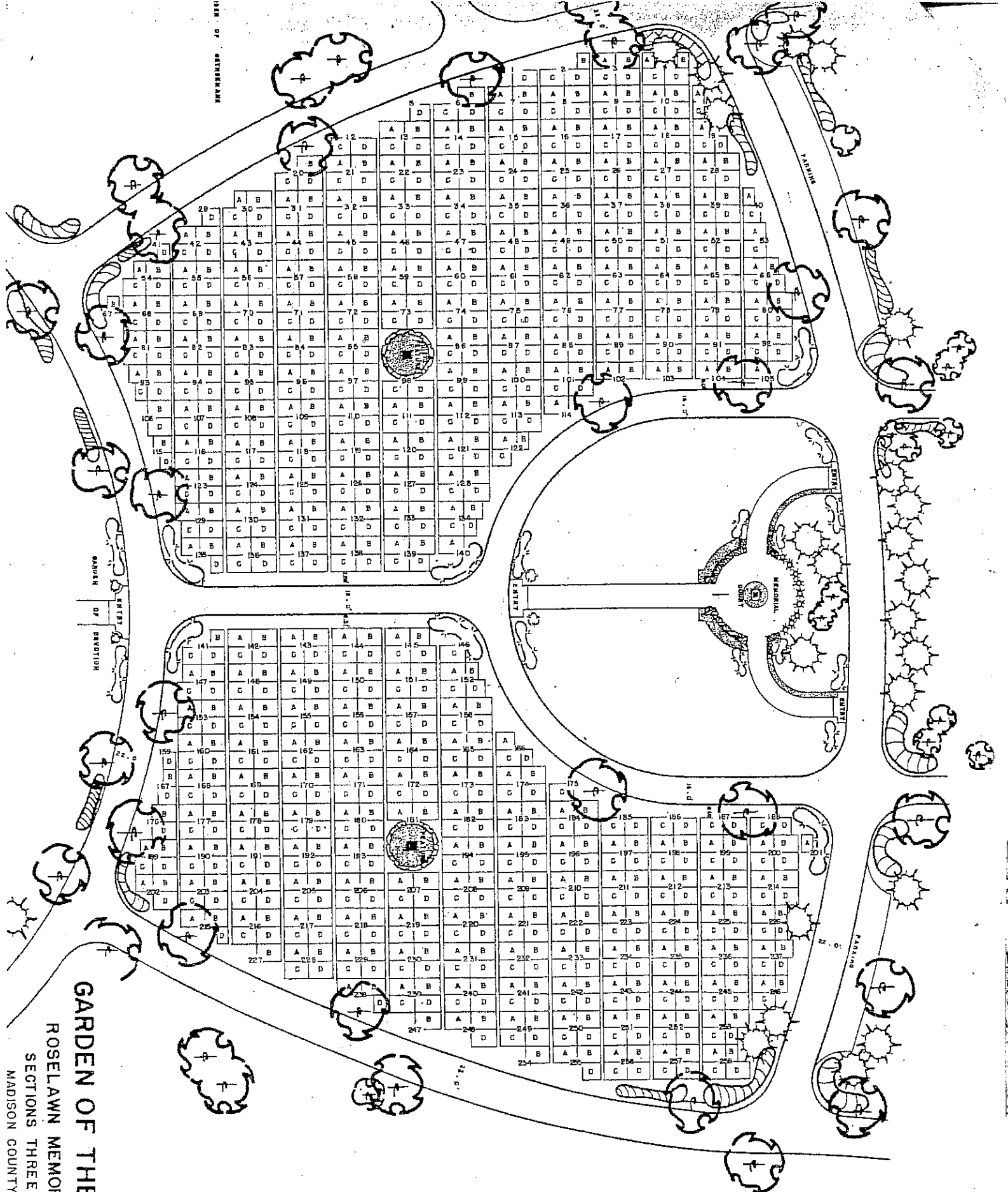
MARKER & SPACE  
LOCATION

# GARDEN OF THE APOSTLES

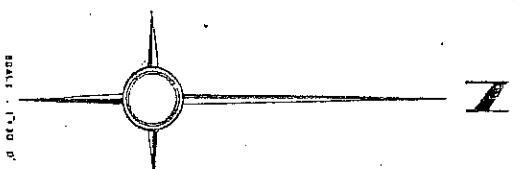
## SECTION EIGHT

GIEN E. JENSEN - LANDSCAPE ARCHITECT 7-23-58

INDEX OF ALPHABET



**GARDEN OF THE CHRISTY**  
**ROSELAWN MEMORY GARDENS**  
 SECTIONS THREE AND FIVE  
 MADISON COUNTY, ILLINOIS

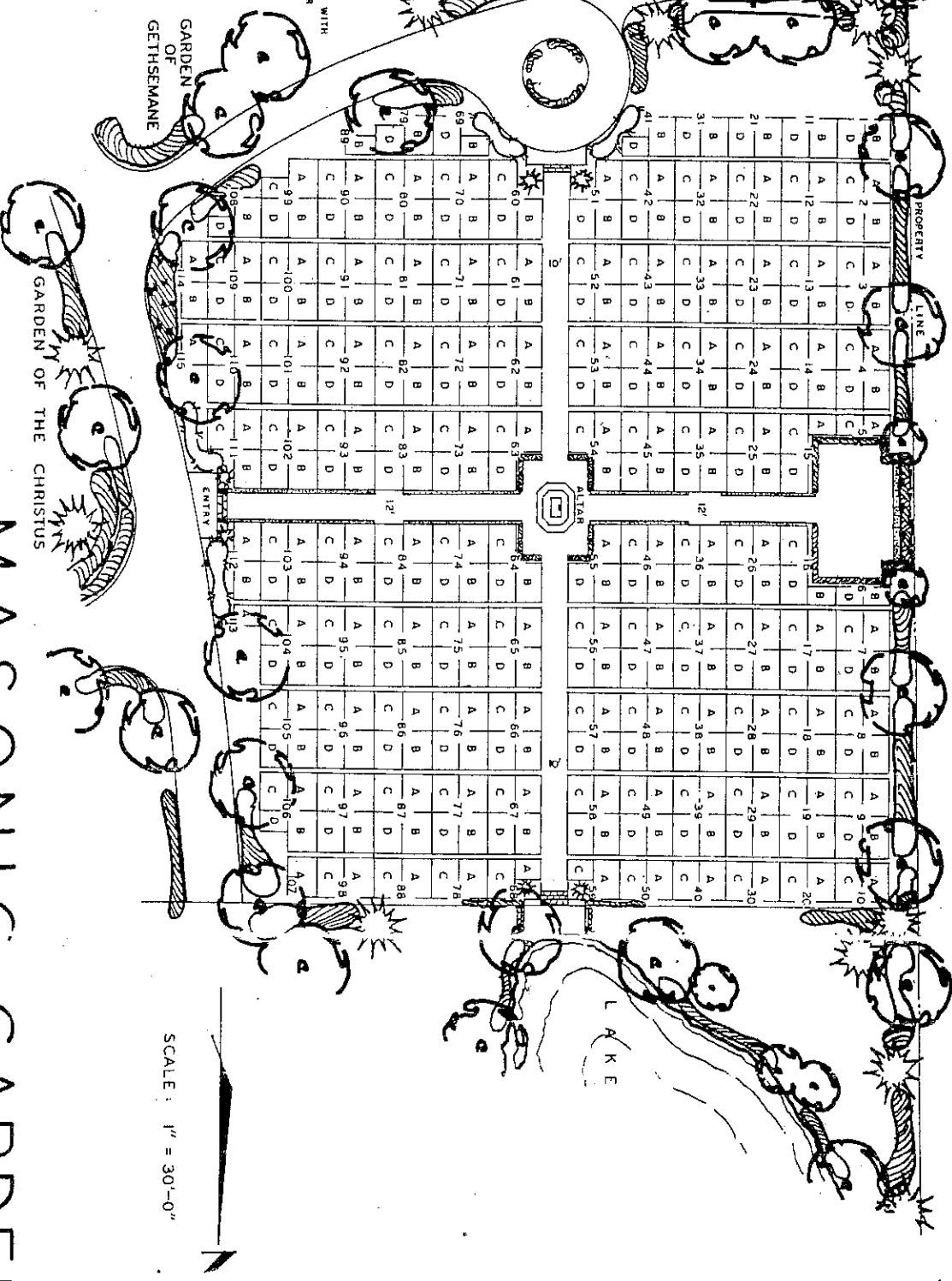
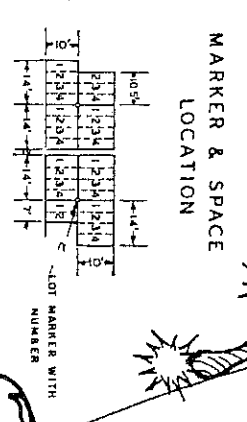
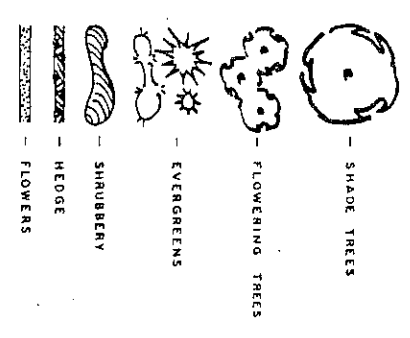


# MASONIC GARDEN

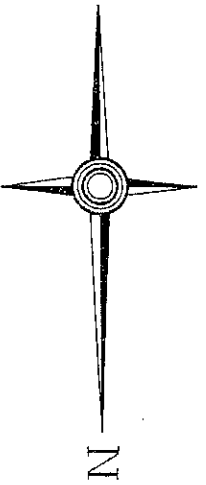
## SECTION SEVEN

### ROSELAWN MEMORY GARDENS

#### MADISON COUNTY, ILLINOIS



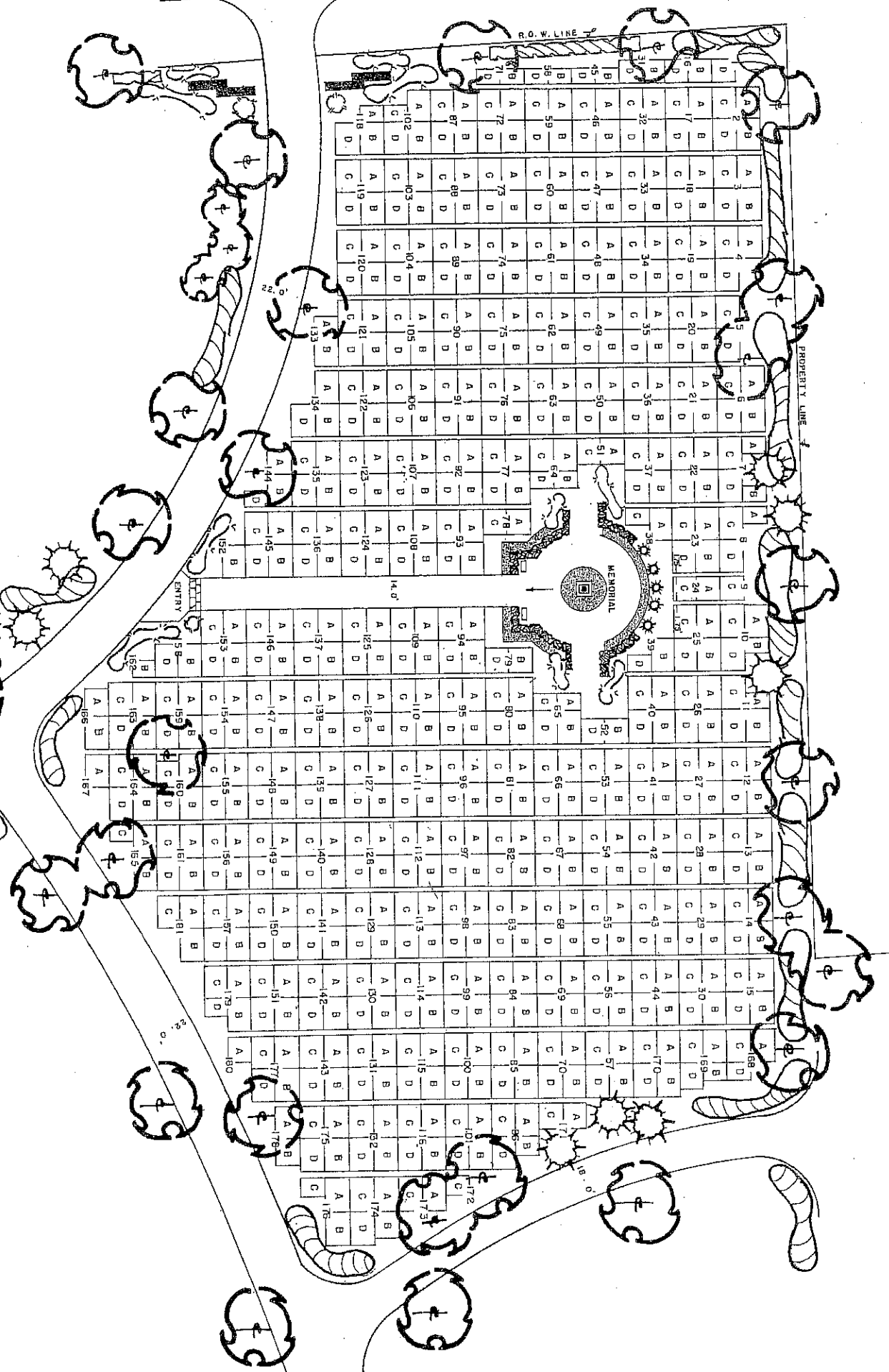
SCALE: 1" = 30'-0"



SCALE: 1" = 30.0'

GARDEN OF GETHESEMANE  
ROSELAWN MEMORY GARDENS

- KEY
- LOWERS
- EDGE
- IMDS



PROPERTY LINE

ROW LINE

MEMORIAL

ENTRY

WALKWAY

N

187

188

189

190

191

192

193

194

195

196

197

198

199

200

201

202

203

204

205

206

207

208

209

210

211

212

213

214

215

216

217

218

219

220

221

222

223

224

225

226

227

228

229

230

231

232

233

234

235

236

237

238

239

240

241

242

243

244

245

246

247

248

249

250

251

252

253

254

255

256

257

258

259

260

261

262

263

264

265

266

267

268

269

270

271

272

273

274

275

276

277

278

279

280

281

282

283

284

285

286

287

288

289

290

291

292

293

294

295

296

297

298

299

300

301

302

303

304

305

306

307

308

309

310

311

312

313

314

315

316

317

318

319

320

321

322

323

324

325

326

327

328

329

330

331

332

333

334

335

336

337

338

339

340

341

342

343

344

345

346

347

348

349

350

351

352

353

354

355

356

357

358

359

360

361

362

363

364

365

366

367

368

369

370

371

372

373

374

375

376

377

378

379

380

381

382

383

384

385

386

387

388

389

390

391

392

393

394

395

396

397

398

399

400

401

402

403

404

405

406

407

408

409

410

411

412

413

414

415

416

417

418

419

420

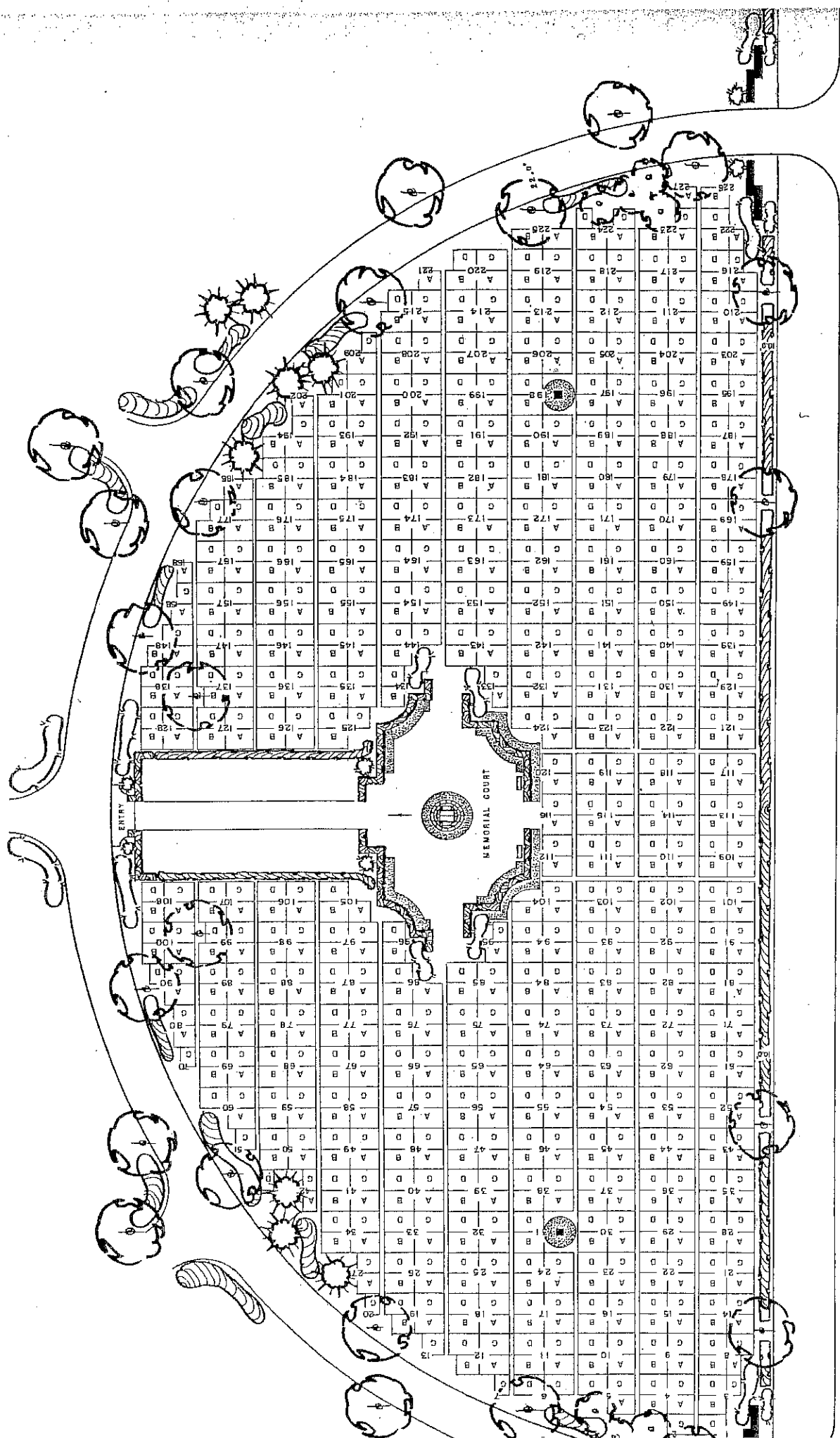
421

422



GARDEN OF DEVOTION

MARKER & SPACE LOCATION



ILLINOIS STATE HIGHWAY ROUTE NO. 140



