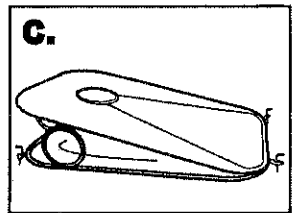
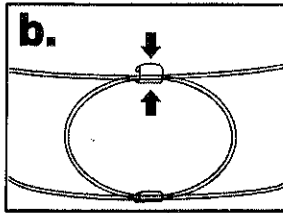
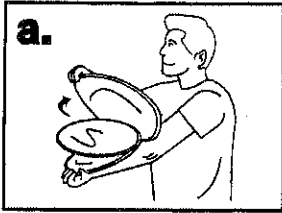


User Guide

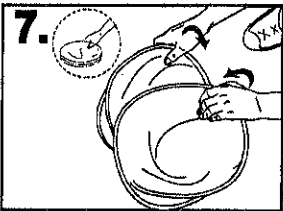
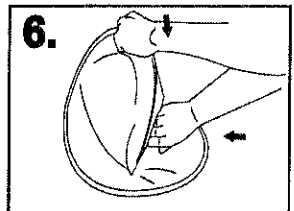
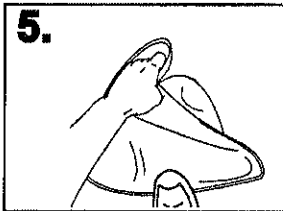
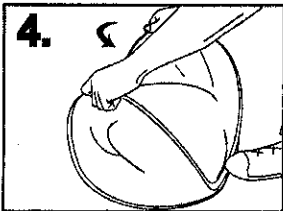
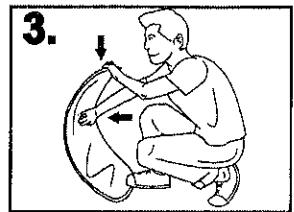
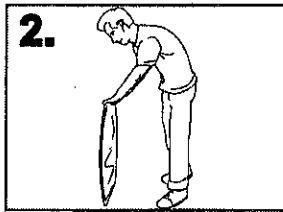
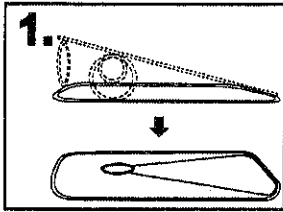
Assembly Method



- Step 1.** Pic a, take out the product, pull open the frame and stretch out automatically;
Step 2. Pic b, stick the side and behind bracket in turn;
Step 3. Pic c, fix the product with the pegs.

.....
Note: Please stretch out the frame carefully in case of causing unexpected physical hurt.
.....

Collapsing Method



- Step 1.** Pic 1, dismantle the bracket in turn;
Step 2. Pic 2, put the product straightly with your hands;
Step 3. Step on the lower edge by your foot. At the same time, press the upper edge with one hand. With the other hand pushing the middle part to bend it like pic 3 shown;
Step 4. Pic 4, keep stepping on the edge, take both ends with your hands, bent it from right to the inside as Pic 5 shown and hold the bracket with your left hand.
Step 5. Pic 6, push it with your right hand and press it down with the left hand to a flat shape.
Step 6. Pic 7, storage the product into a round shape, put it in the storage bag.

